

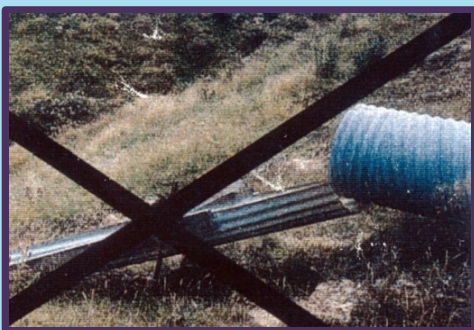
Culvert Stock[®]

Manufactured from "LANDMARK", flexible polypropylene fabric. Culvert Sock is used primarily to transmit water from the discharge end of a culvert, and prevent soil erosion of roadside embankments.



Advantages

- Does away with expensive half-pipe fluming.
- One-man installation for most sizes. Average Culvert Sock can be fitted in less than one hour.
- 10 year warranty against UV degradation.
- Culvert Socks for pipe dia. ranging from 225mm I.D. to 900mm I.D. (Larger sizes on request)
- Standard sizes suit all pipe materials. Concrete, plastic, steel pipe etc.
- Standard 50m lengths can be cut on site to suit, or we can weld to make any length required.
- Double cleat and single cleat options to suit different ground conditions.



Recommended by:

Regional Councils
City/District Councils
Dept. of Conservation
Transit NZ
Civil Engineers

Used by:

Roading Contractors
Drainage Contractors
Forestry
Farmers
Landscapers
Irrigation Contractors

MANAGING DIRECTOR:

Peter Madsen

Ph 0800 826 628

PO BOX 5103
Greenmeadows
6 Nilgiri Road
RD2 Napier, NZ

or Ph 06 845 0065
Fax 06 845 1197
Mob 027 33 11 00
Email: aquatuff@xtra.co.nz

Pond Liners

Manufactured from "LANDMARK", flexible polypropylene fabric. Pond Liners are used primarily to prevent the loss of water from storage ponds and dams. These storage ponds can be for stock watering, irrigation, fire fighting etc. or can be simply be used as a decorative pond.



Advantages

- Prevents water loss through seepage.
- Prevents erosion of the pond banks from wave action.
- Liner prefabricated off-site. No on-site welding required.
- No specialist equipment required for installation. Just a little extra man-power.
- 10 year warranty against UV degradation.
- Pond Liners can be made to measure. Maximum depth 3.5m.

Used by:

Forestry
Farmers
Orchardists
Landscapers



MANAGING DIRECTOR:

Peter Madsen

Ph 0800 826 628

PO BOX 5103
Greenmeadows
6 Nilgiri Road
RD2 Napier, NZ

or Ph 06 845 0065
Fax 06 845 1197
Mob 027 33 11 00
Email: aquatuff@xtra.co.nz